

The Forest Lyceum

Winter and Spring 2012 Lecture Series

Saturday, February 11th ...at the Douglas Library

and

Saturday, February 18th ...at the Douglas Library

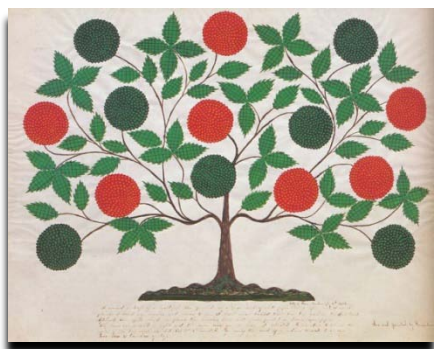
Wine and Cheese reception at 4:00 pm

Presentation begins promptly at 4:30 pm

Free Admission – Open to the Public — **but!**

Space is Limited — Reservations are Required

Please call 860.824.7863 or email jean@greatmountainforest.org



The Shakers

Forest Conservation,
Green Design,
Sustainable Agriculture
...200 years ago



Paul K. Barten, Ph.D.

Executive Director, Great Mountain Forest

Professor of Forest Resources, University of Massachusetts Amherst

Almost everyone recognizes Shaker furniture and folk art (...like the “gift drawings” by Sister Hannah Cohoon shown above) but not many people appreciate the lasting influence of this comparatively small group of people (6,000 members in 19 communities at their peak in 1840) on American life. This lecture and slide presentation will highlight their remarkable ingenuity and legacy and offer some observations about how we could more deliberately adopt the “sustainability” principles and practices they employed so successfully ...two centuries ago.



Organized by: Great Mountain Forest, Norfolk and Canaan, Connecticut 860.542.5422,
www.greatmountainforest.org

February 2012 Location: **Douglas Library**, 108 Main Street (Rt. 44), North Canaan, CT 06018, 860.824.7863, www.douglaslibrarycanaan.org **Plenty of free parking behind the library**)